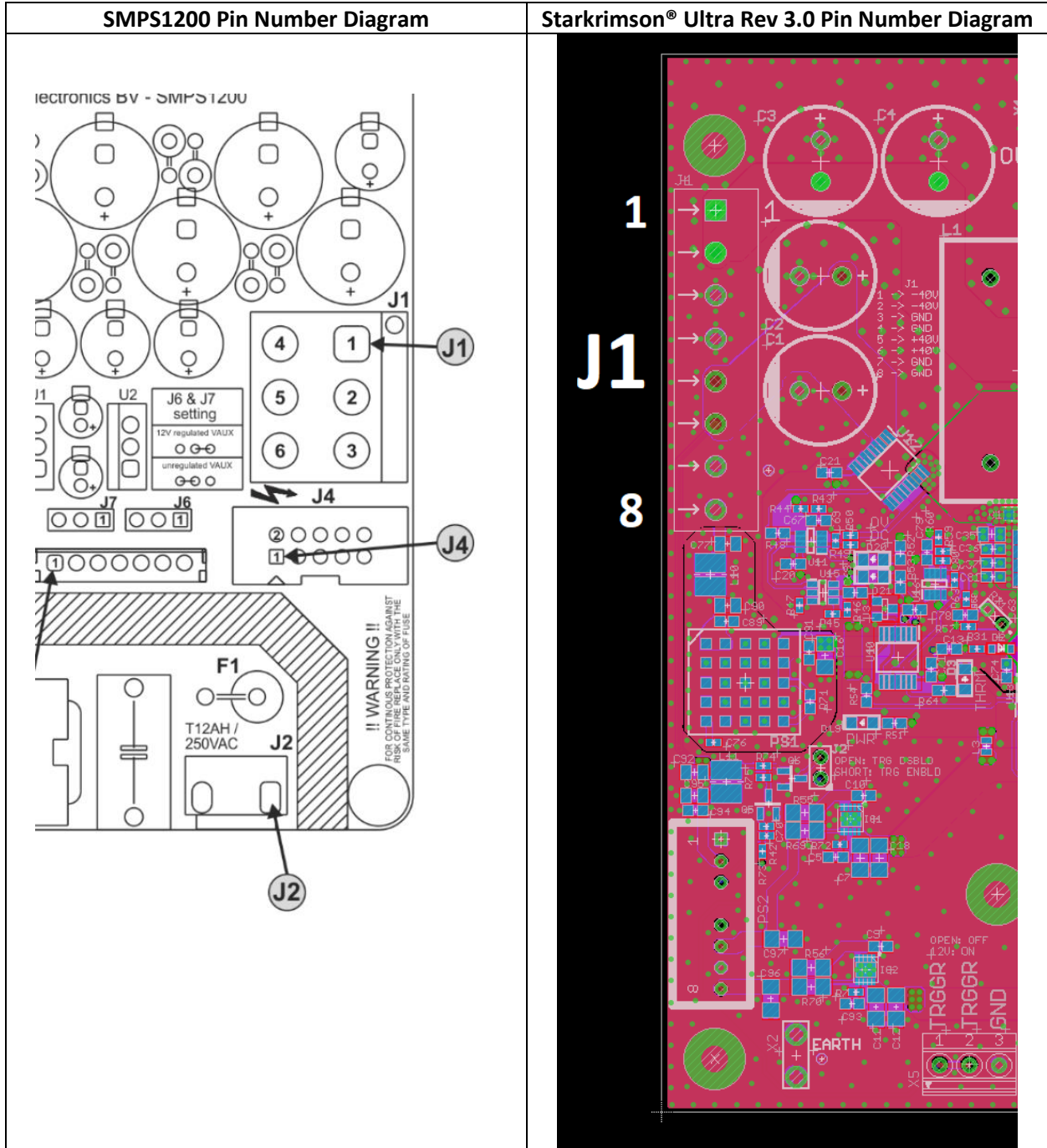


## Connecting Hypex SMPS1200A100 to Starkrimson® Ultra Rev 3.0

Connect wires as indicated by the table below. To connect a second module, see next page.

SMPS1200A100	Starkrimson® Ultra	Description
J1.2	J1.5	Positive Supply Rail (+36V)
J1.5	J1.1	Negative Supply Rail (-36V)
J1.6, J1.3	J1.3, J1.7	GND



## **Connecting Second Starkrimson Ultra Rev 3.0**

To use single Hypex Power Supply for stereo (two modules) operation, wire the SMPS1200 to the first module then connect wires from the first module to the second module, like this:

<b>Module 1</b>	<b>Module 2</b>	<b>Description</b>
J1.6	J1.5	Positive Supply Rail
J1.2	J1.1	Negative Supply Rail
J1.4, J1.8	J1.3, J1.7	GND