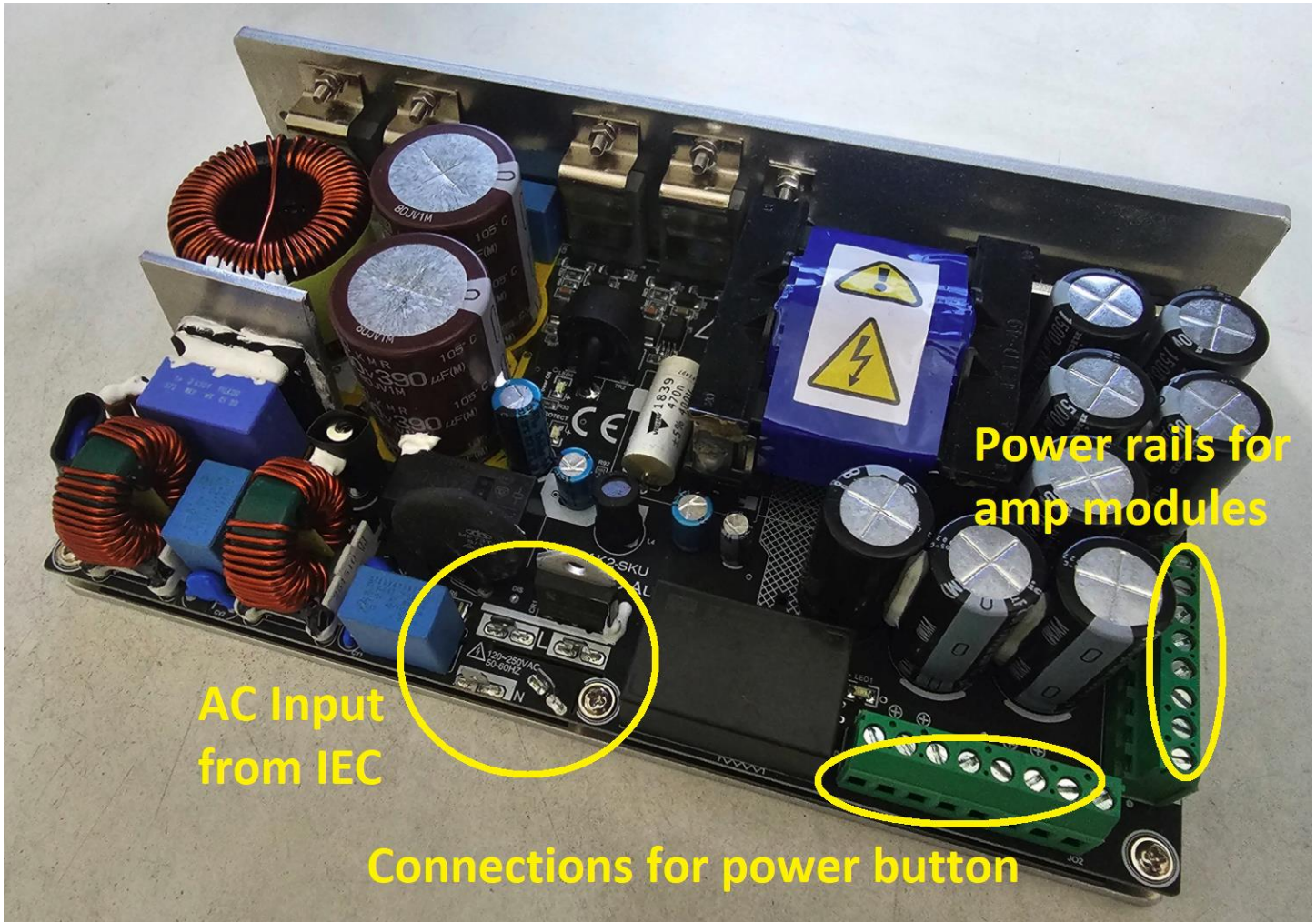


Connection to SMPS1K2-SKU



Connecting AC Input

Use 16 AWG wire and connect from AC neutral to one of the "N" labeled terminals. Use 16 AWG wire and connect from AC Line to one of the "L" labeled terminals. Twist the two above wires together.

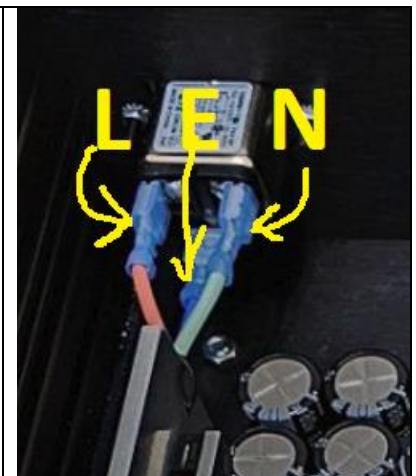
Use 16 AWG wire to connect earth ("E"), using a ring terminal to PEM on plate.

If there are two power supplies (dual mono) connect from the second set of "L" and "N" terminals to the second power supply's "L" and "N".

Keep the AC wires to the left side and bottom of the enclosure away from the DC wires.

See the image on the last page of this document for reference.

If using a single power supply put it on left hand side of a chassis see last page for reference.



Connecting RCA to XLR Converter

The two power wires from the converter get connected to the AUX output on the same connector as the power button. Red to + and Black to -.

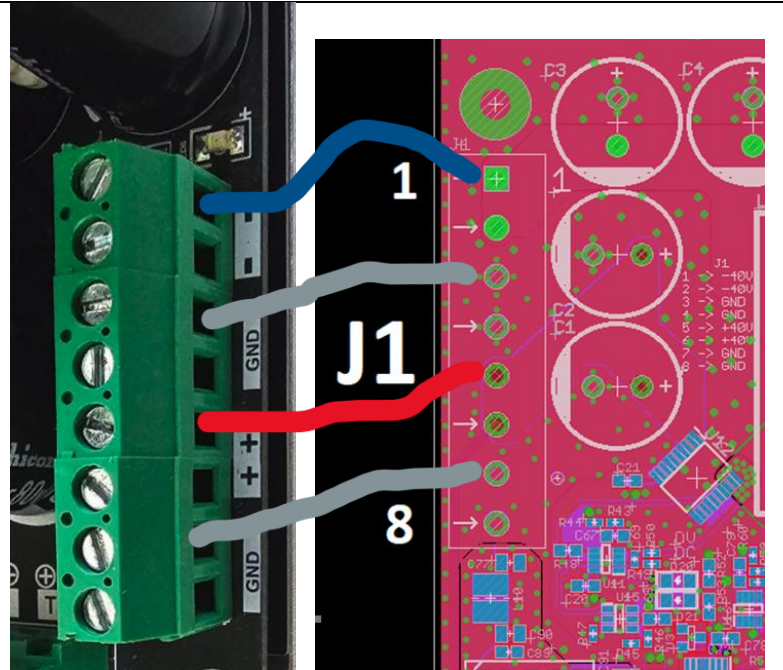
Connecting Power Rails to Amp Module

Use 16 AWG wire and connect from one of the “-“ terminals on JO1 from power supply to one of the “-40V” terminals on the amp module
Use 16 AWG wire and connect from one of the “GND” terminals on JO1 from power supply to one of the “GND” terminals on the amp module
Twist the two above wires together.

Use 16 AWG wire and connect from one of the “+“ terminals on JO1 from power supply to one of the “+40V” terminals on the amp module
Use 16 AWG wire and connect from one of the “GND” terminals on JO1 from power supply to one of the “GND” terminals on the amp module
Twist the two above wires together.

If you have capacitor upgrade board wire to them first and then from the cap boards wire to the modules. Follow connector markings on the PCBs. The cap board connection **are not** in the same order.

See image on the last page of this document for reference.



Connecting Power Button

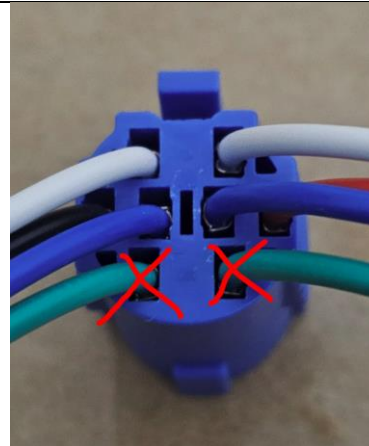
The green wires on the button connector are not used, you may cut them off.

All connections from the button go to the JO2 connector on the power supply

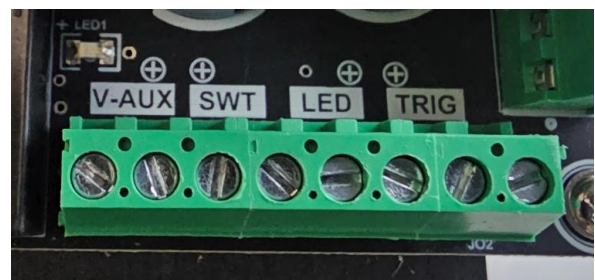
Connect the red wire to LED “+“ terminal
Connect the black wire to the other LED terminal
If you have two power supplies connect to one or the other.

Connect white wire to one of the SWT terminals
Connect corresponding blue wire (from same side of button) to the other SWT terminal.
If you have two power supplies connect the other set of blue and white wires to the second power supply’s SWT terminals. If you have only one power supply the other set of blue and white wires is not used.

See image on the last page of this document for reference.



NOTE: On some of the harnesses wire colors are different. The Yellow wires are not used instead of green.



Fully Assembled Dual Mono Amplifier Example

